



# TIPTON BICYCLE AND PEDESTRIAN MASTER PLAN

---

DRAFT PLAN PRESENTATION

FEBRUARY 15, 2023

# NEED FOR THE PLAN



- \$1 Spent on trail = \$3 direct savings in medical expenses (American Heart Association)
- 30 Minutes of walking each day can prevent Diabetes and High Blood Pressure

## • Improved Health Benefits



- Less vehicles = better air quality
- Plants reduce excess storm runoff and improve air quality
- Greenway provides animal habitat

## • Environmental Benefits

- Trails are the number one amenity sought by homeowners (National Association of Home Builders)
- Trails increase home values within 1000 ft of a trail by \$9000 (University of Cincinnati)
- Every 1 million spent on trails = 9.6 Jobs
- Visitors to the Little Miami Scenic Trail in Ohio spend \$13.54 per visit on food and beverages. With 150,000 trail users per year and 72% buying soft goods = approx. \$1.5 million



## • Economic Development

## LIVEABLE COMMUNITIES!

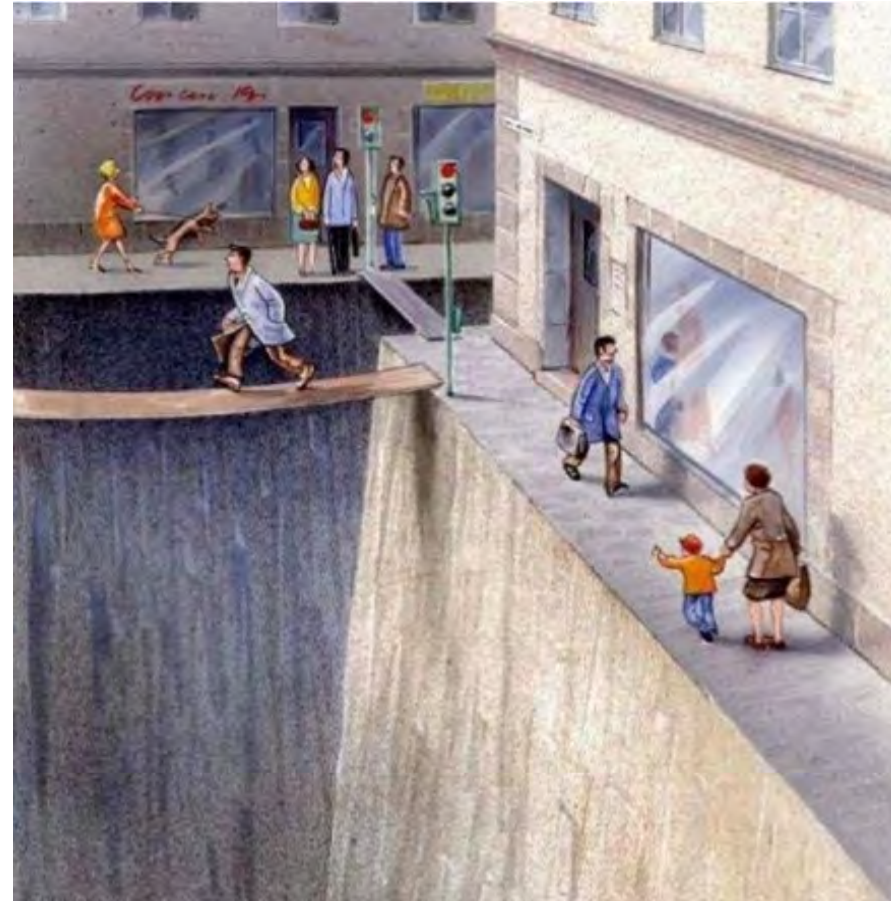


## • Better Quality of Life

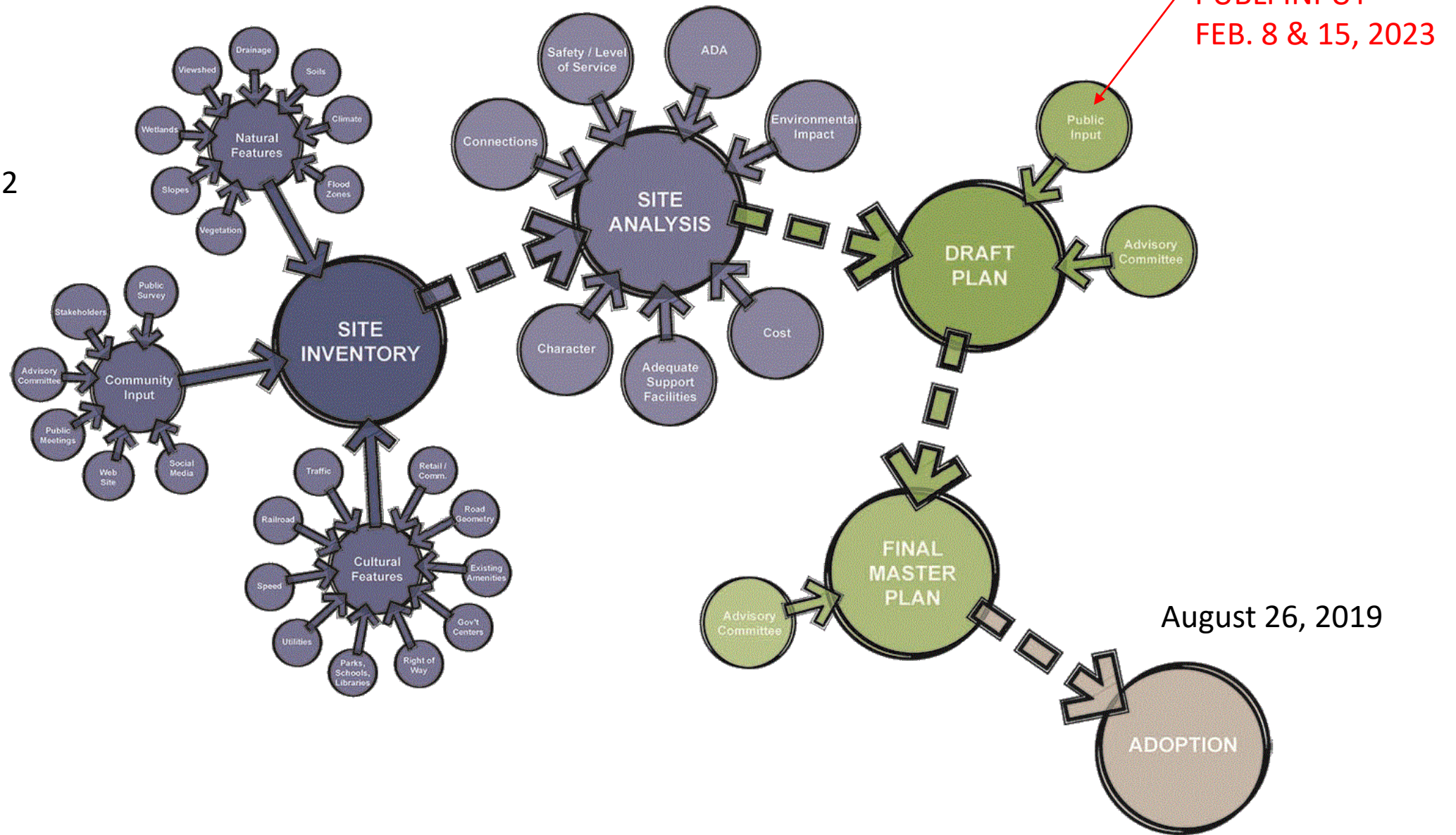
# NEED FOR THE PLAN

---

“Safety”



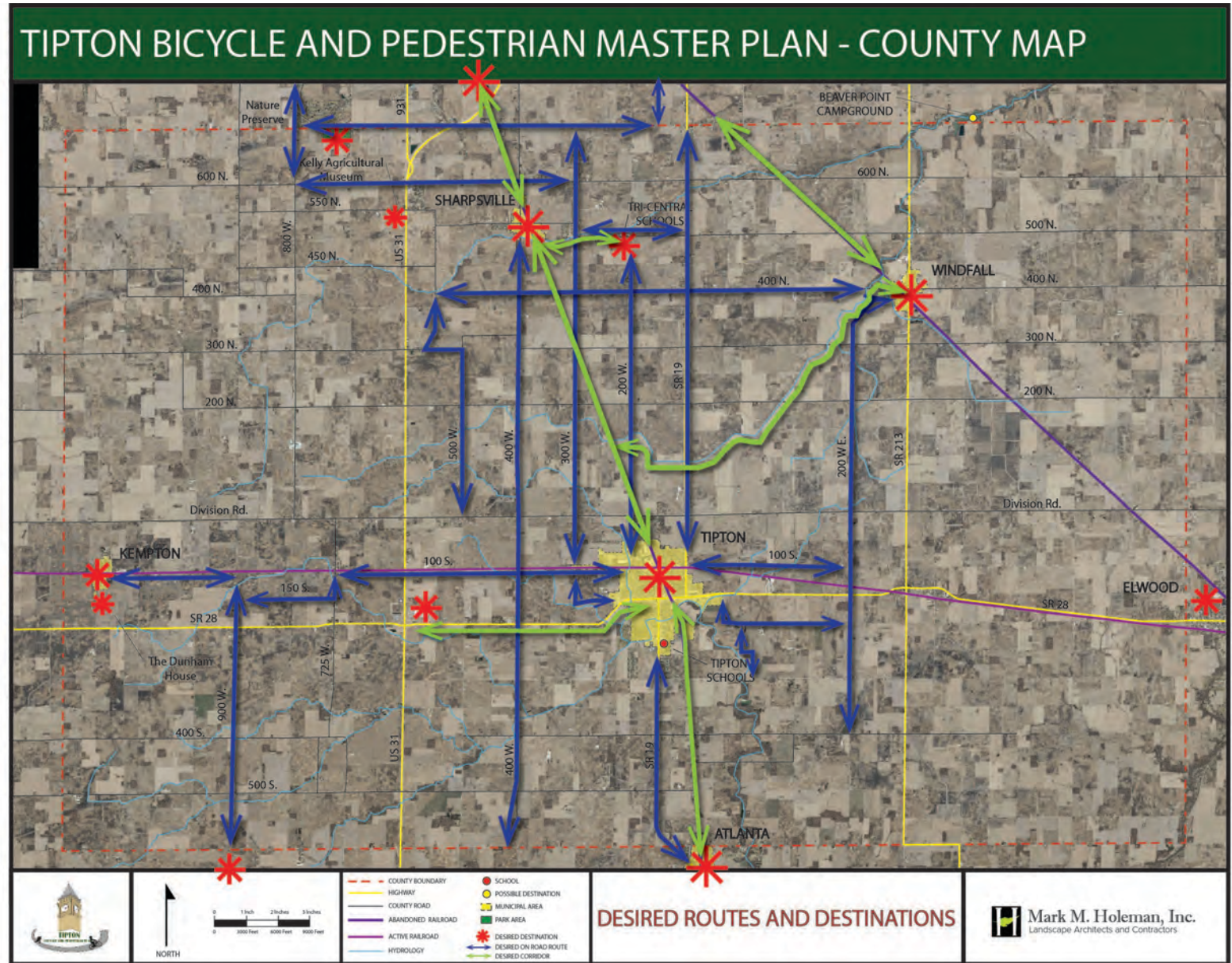
Kickoff Meeting  
October 27, 2022





# TIPTON COUNTY- PUBLIC DESTINATIONS AND DESIRED CORRIDORS

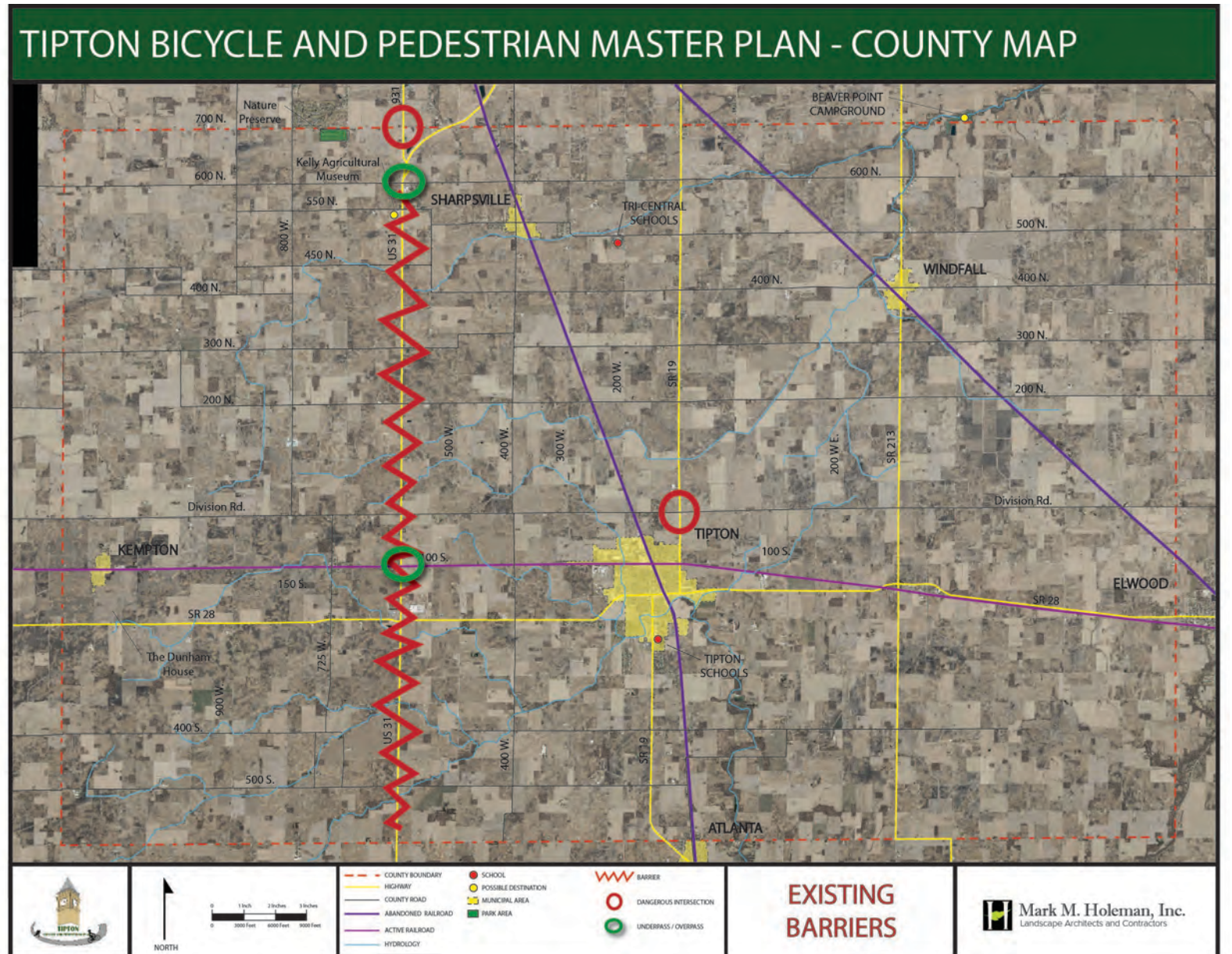
- From 3 Public Input Meetings
- 3 Stakeholder Meetings
- Tipton Winter Farmers Market





# TIPTON COUNTY- BARRIERS

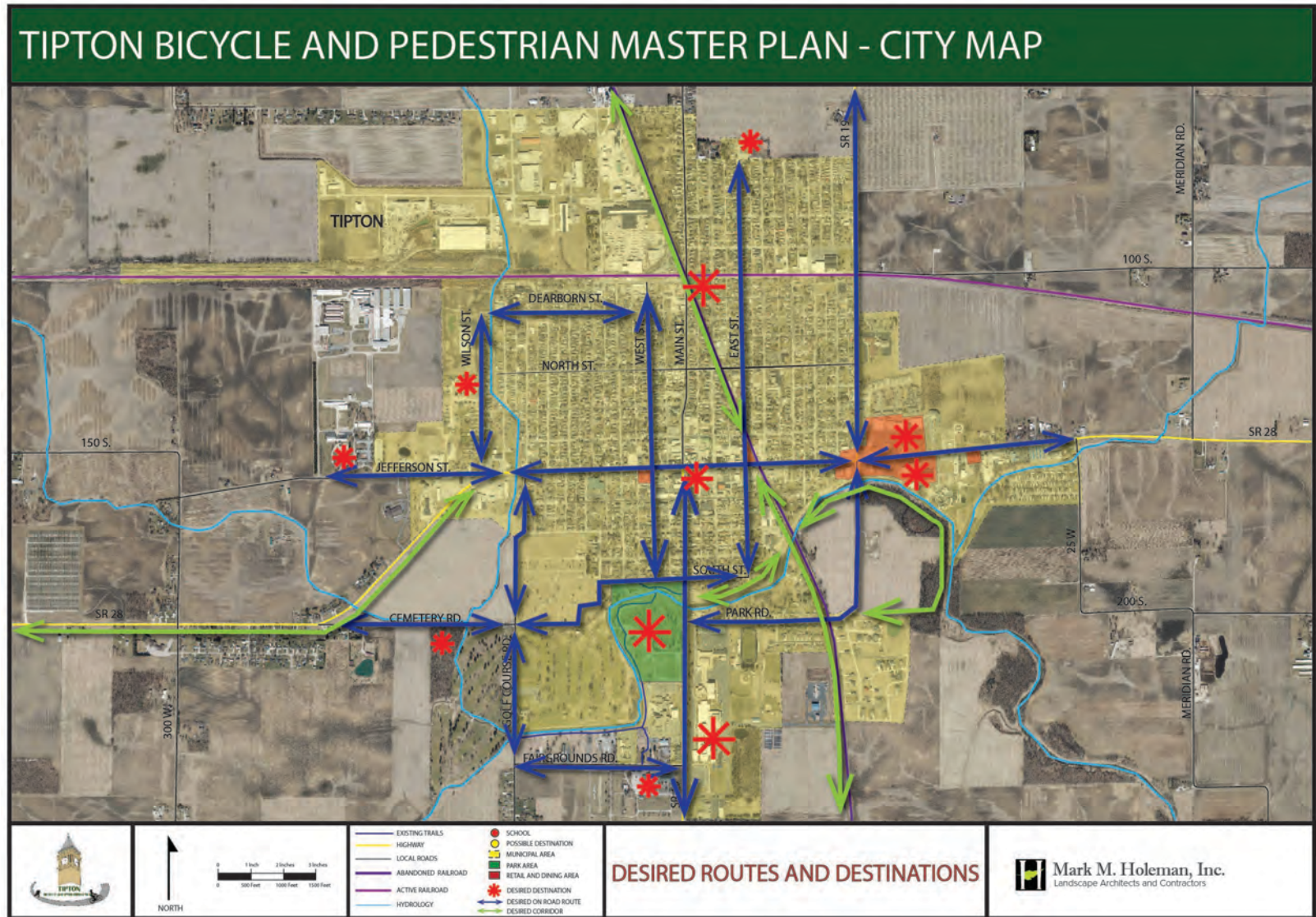
- From 3 Public Input Meetings
- 3 Stakeholder Meetings
- Tipton Winter Farmers Market





# CITY OF TIPTON - PUBLIC DESTINATIONS AND DESIRED CORRIDORS

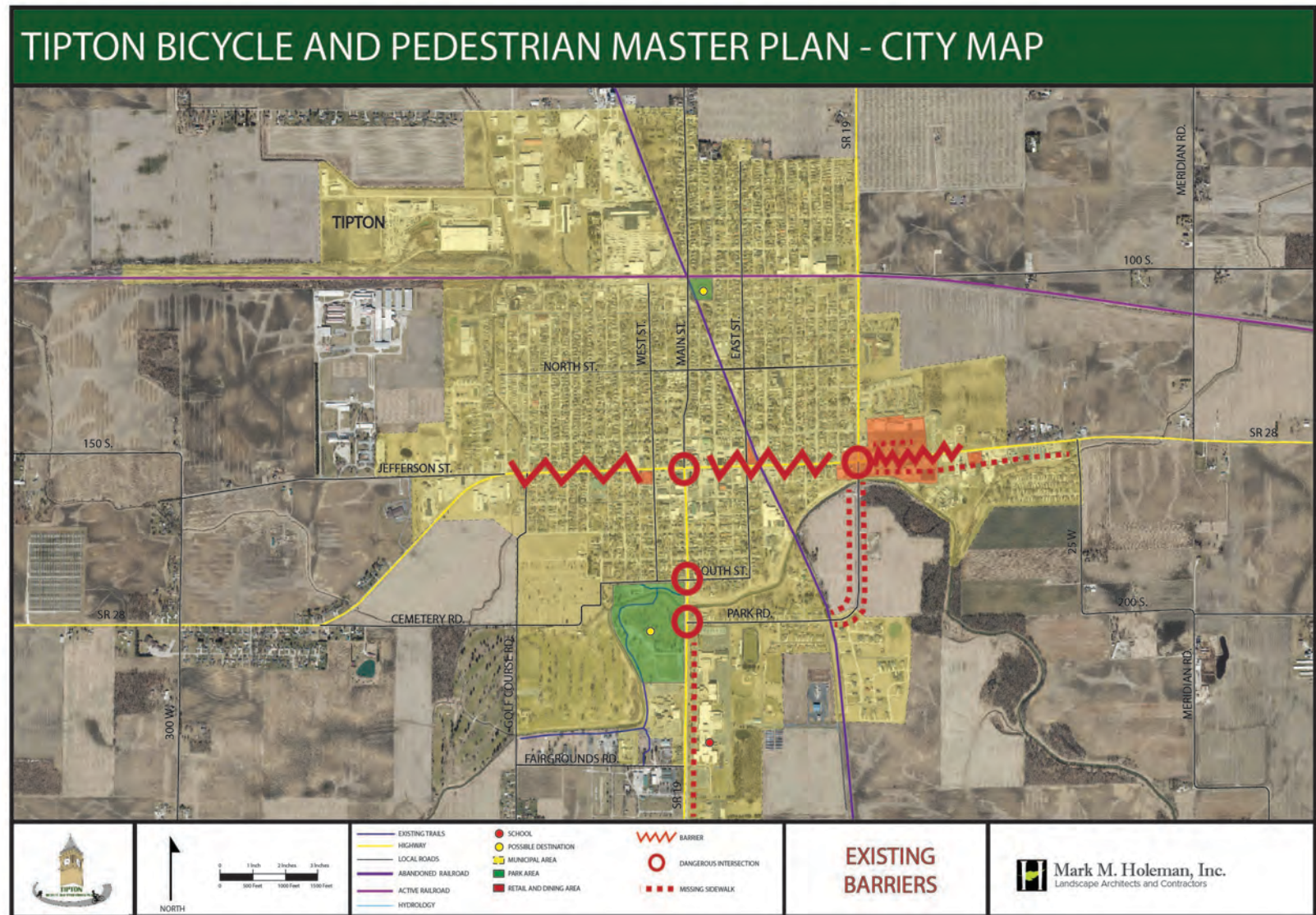
- From 3 Public Input Meetings
- 3 Stakeholder Meetings
- Tipton Winter Farmers Market





- From 3 Public Input Meetings
- 3 Stakeholder Meetings
- Tipton Winter Farmers Market

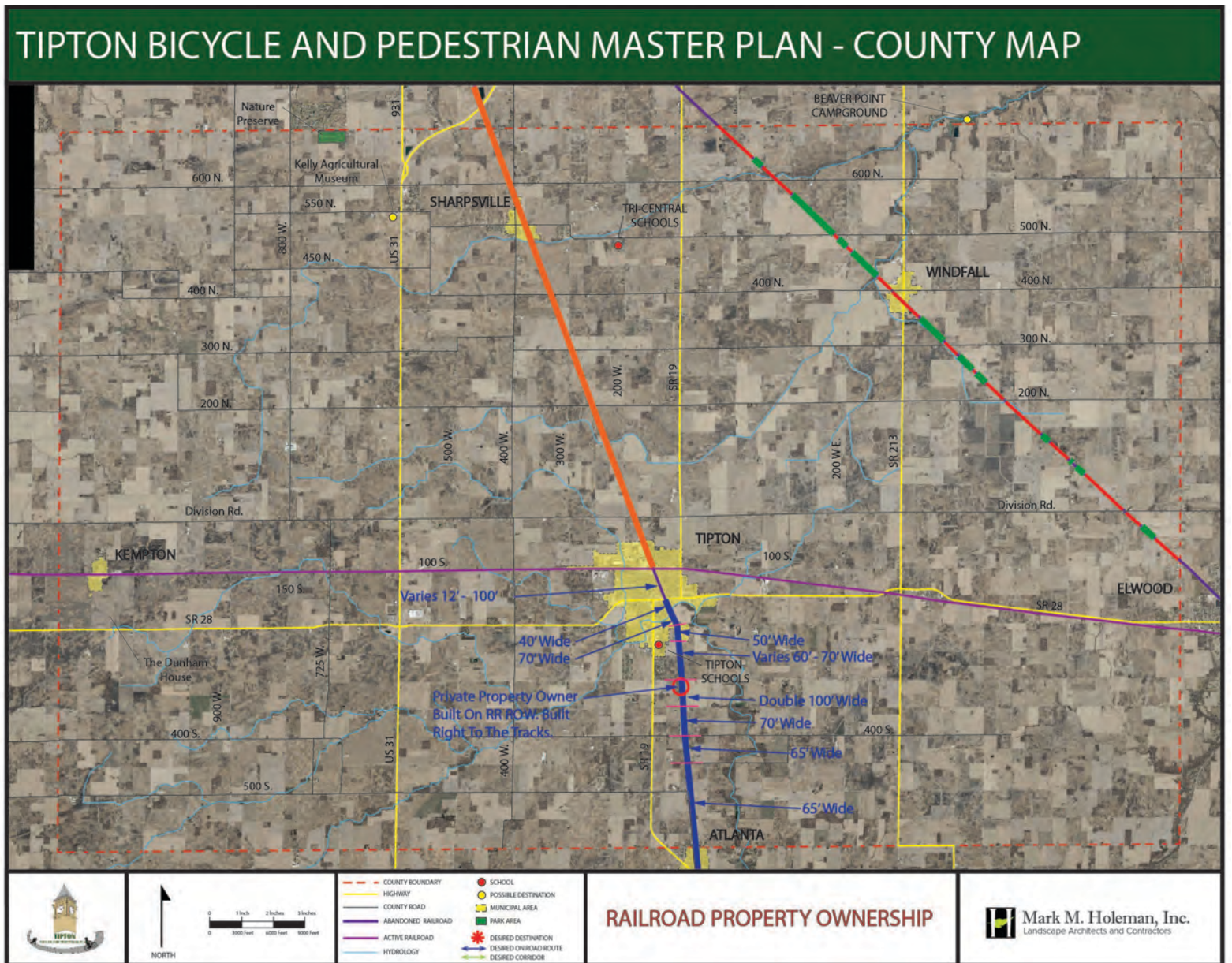
- From 3 Public Input Meetings
- 3 Stakeholder Meetings
- Tipton Winter Farmers Market





# TIPTON COUNTY- RAILROAD PROPERTY

- From Beacon GIS for Local Governments



# BLOS & PLOS Factors:



## Geometry:

- Number of Lanes
- Width of Lanes
- Existing Marked Parking?
- Pavement Condition
- Existing Sidewalk?
- Sidewalk Pavement Condition.
- Width of Buffer Between Road and Sidewalk
- Existing Street Trees?

## Traffic:







- Daily Traffic Volume
- Posted Speed Limit
- % of Heavy Vehicles



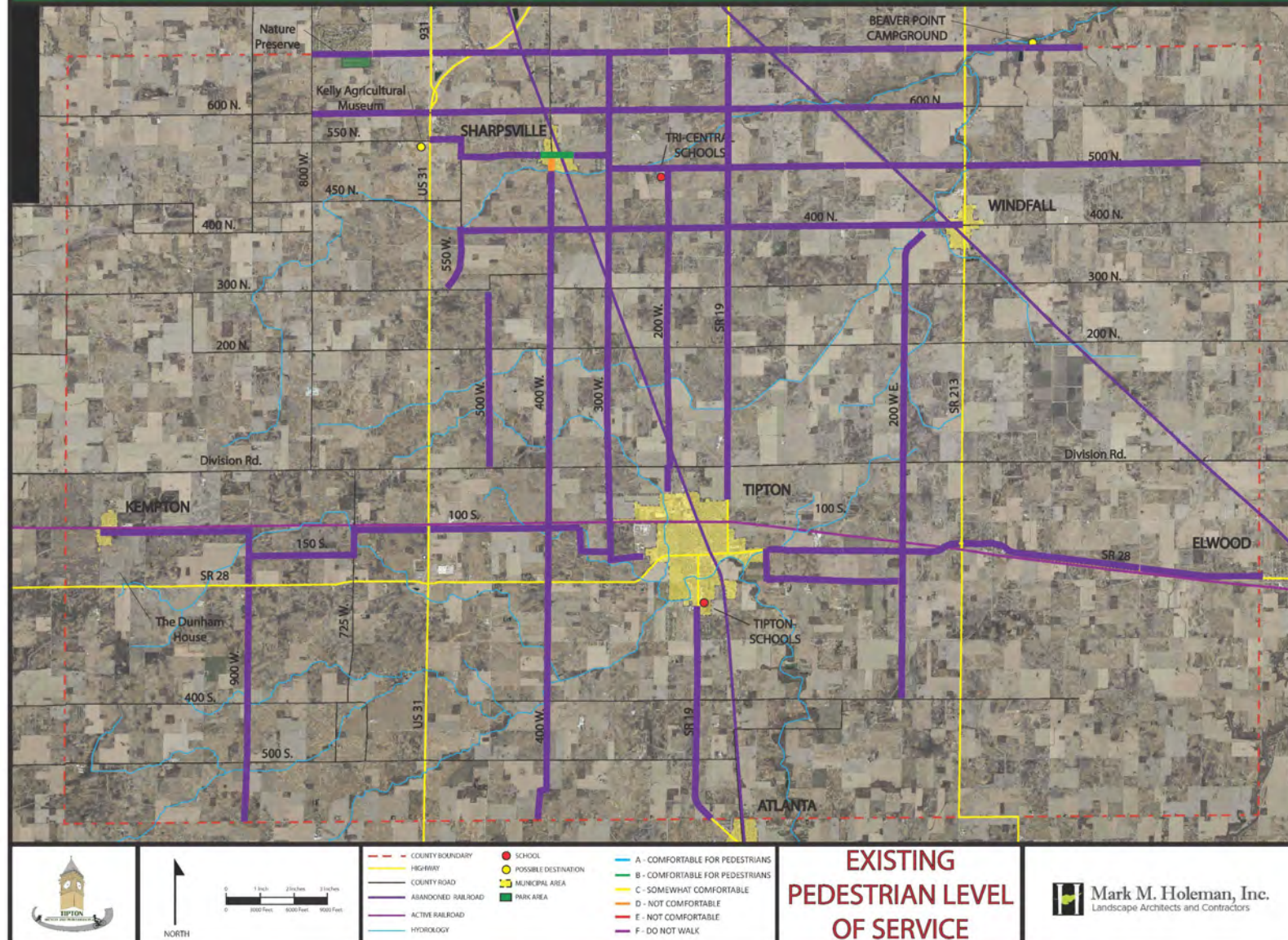


**Bicycle Level of Service (BLOS)** – A nationally used measure of on-road bicyclist comfort level as a function of a roadway's geometry and traffic conditions. BLOS is used in the Highway Capacity Manual.

**Pedestrian Level of Service (PLOS)**– A nationally used measure for evaluating a roadway's walking conditions.

| <u>Level of Service</u>   |   | <u>BLOS AND PLOS SCORE</u> |
|---|---|----------------------------|
|    | A | $\leq 1.5$                 |
|    | B | $>1.5$ and $\leq 2.5$      |
|    | C | $>2.5$ and $\leq 3.5$      |
|  | D | $>3.5$ and $\leq 4.5$      |
|  | E | $>4.5$ and $\leq 5.5$      |
|  | F | $>5.5$                     |

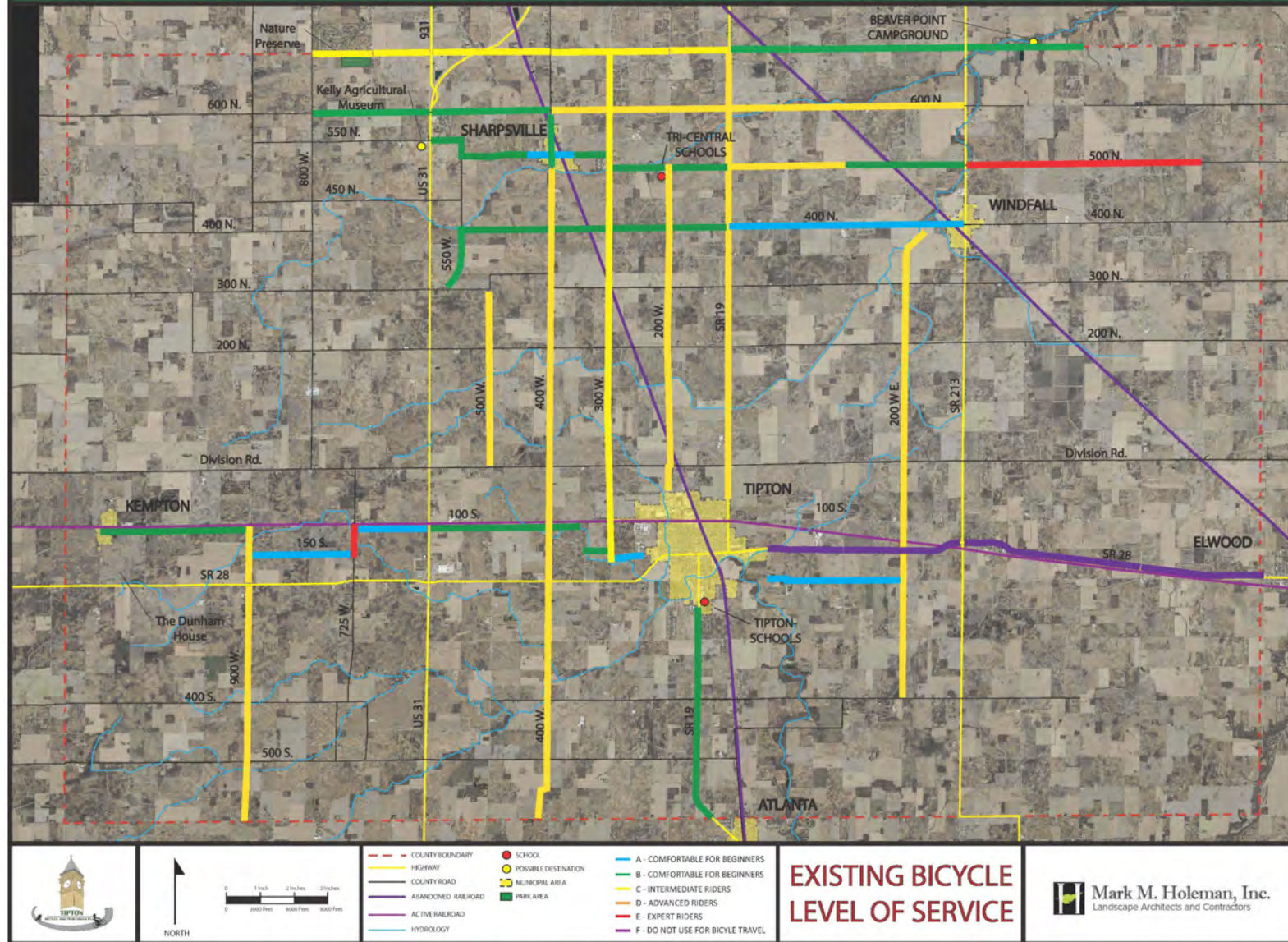
# TIPTON BICYCLE AND PEDESTRIAN MASTER PLAN - COUNTY MAP



**Mark M. Holeman, Inc.**  
Landscape Architects and Contractors

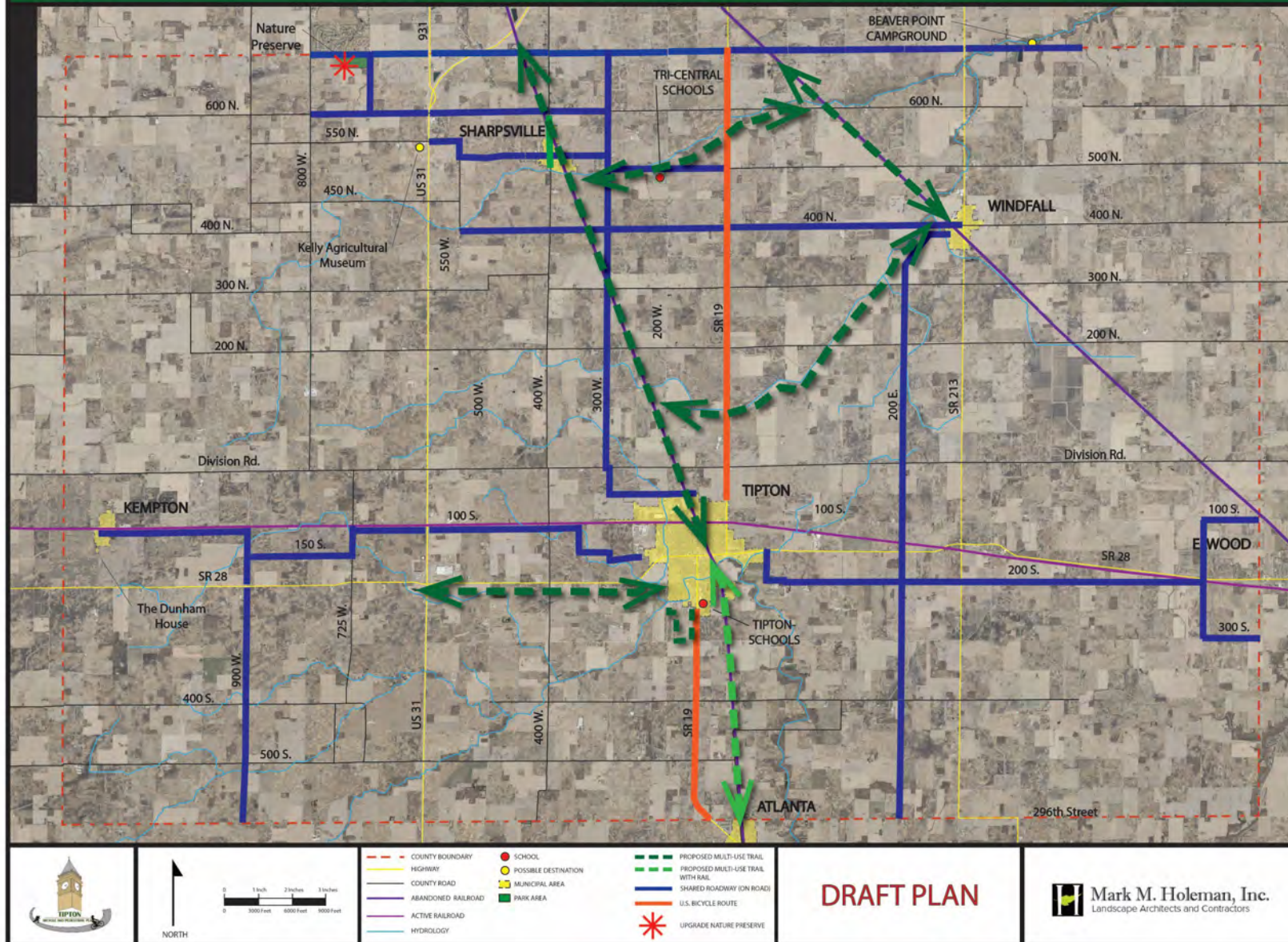


# TIPTON BICYCLE AND PEDESTRIAN MASTER PLAN - COUNTY MAP



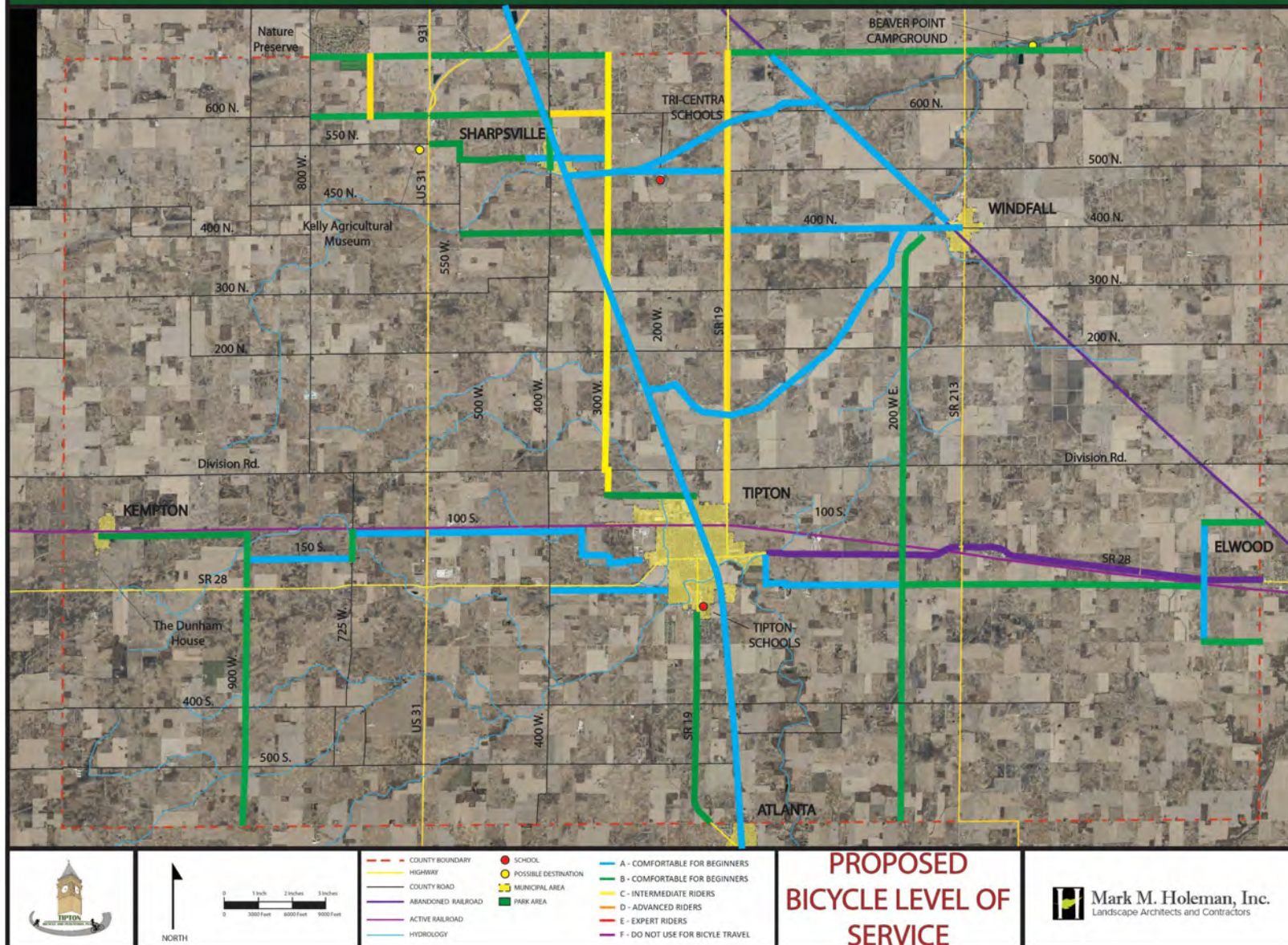


# TIPTON BICYCLE AND PEDESTRIAN MASTER PLAN - COUNTY MAP



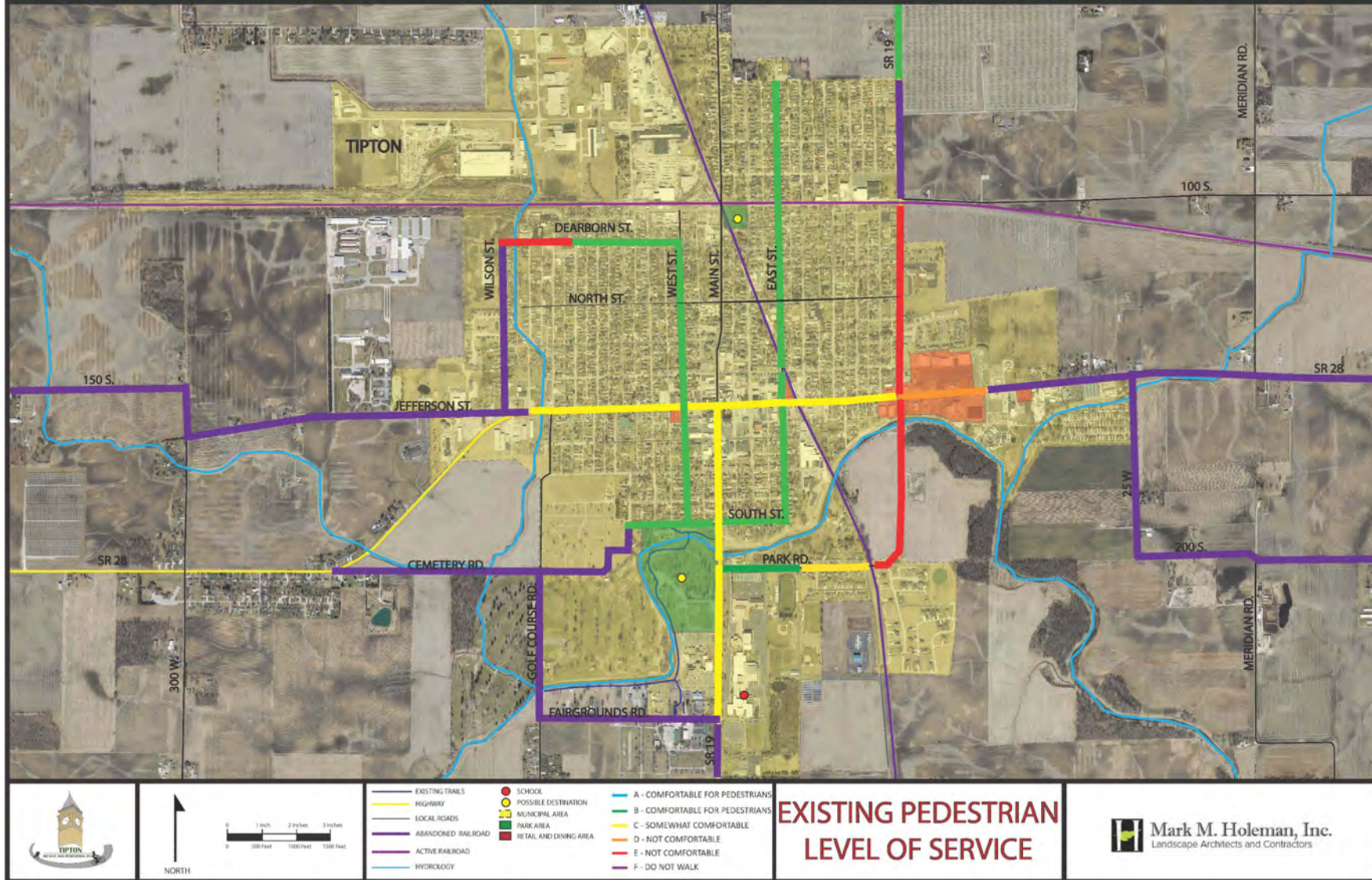


# TIPTON BICYCLE AND PEDESTRIAN MASTER PLAN - COUNTY MAP



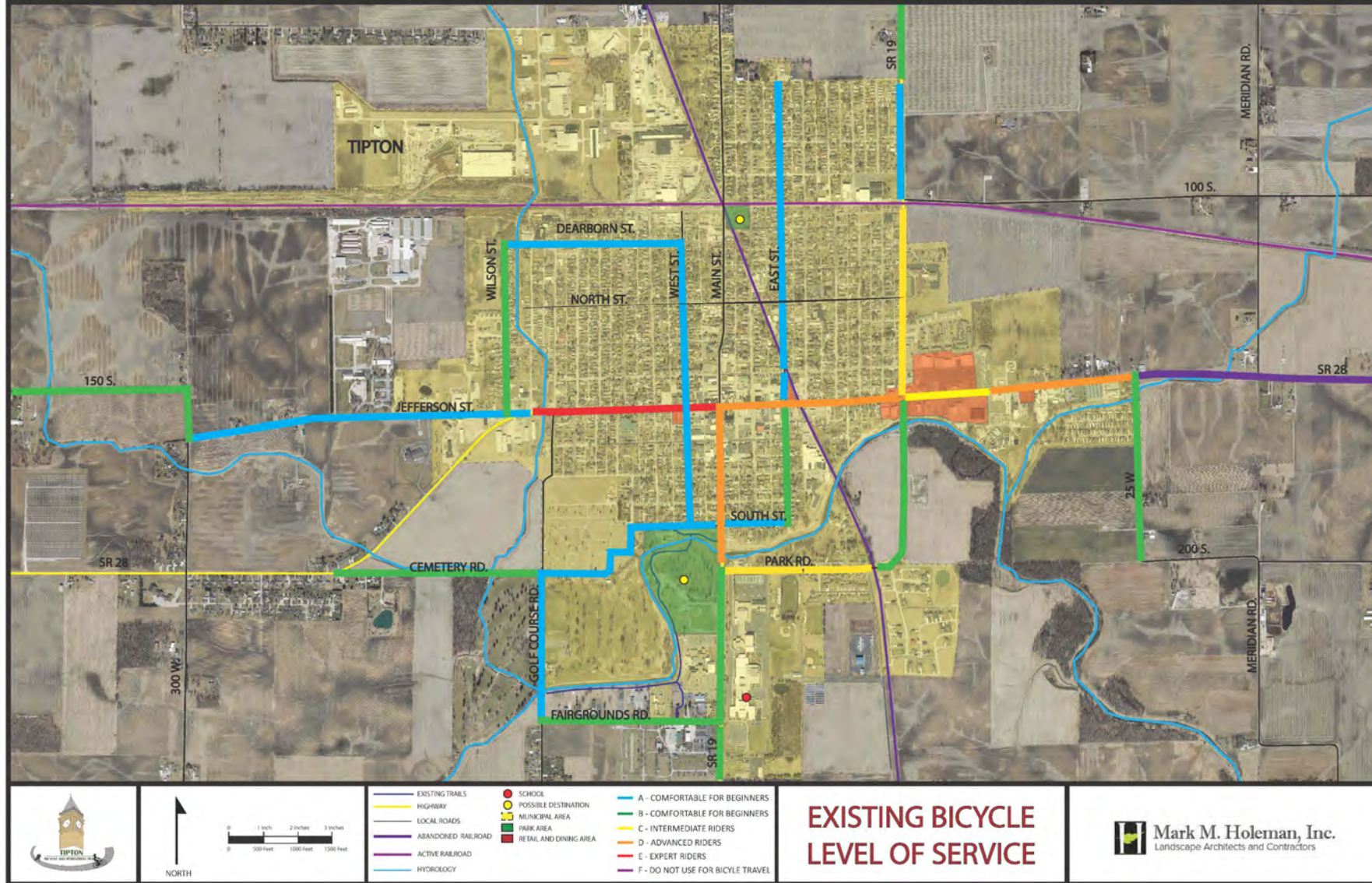


# TIPTON BICYCLE AND PEDESTRIAN MASTER PLAN - CITY MAP



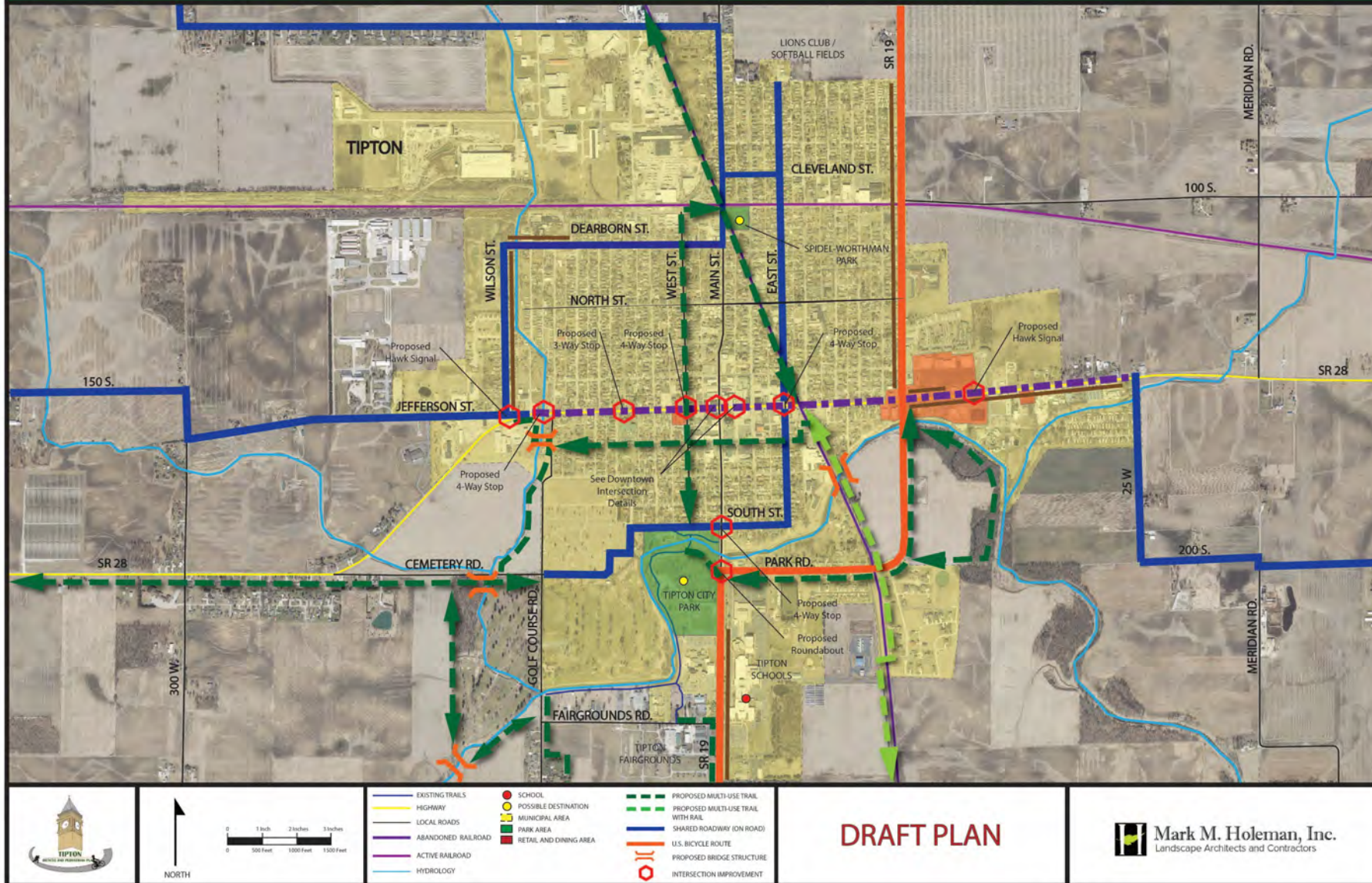


# TIPTON BICYCLE AND PEDESTRIAN MASTER PLAN - CITY MAP

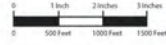




# TIPTON BICYCLE AND PEDESTRIAN MASTER PLAN - CITY MAP





[illegible]

- 
- |                    |                        |                                 |
|--------------------|------------------------|---------------------------------|
| EXISTING TRAILS    | SCHOOL                 | A - COMFORTABLE FOR PEDESTRIANS |
| HIGHWAY            | POSSIBLE DESTINATION   | B - COMFORTABLE FOR PEDESTRIANS |
| LOCAL ROADS        | MUNICIPAL AREA         | C - SOMEWHAT COMFORTABLE        |
| ABANDONED RAILROAD | PARK AREA              | D - NOT COMFORTABLE             |
| ACTIVE RAILROAD    | RETAIL AND DINING AREA | E - NOT COMFORTABLE             |
| HYDROLOGY          |                        | F - DO NOT WALK                 |

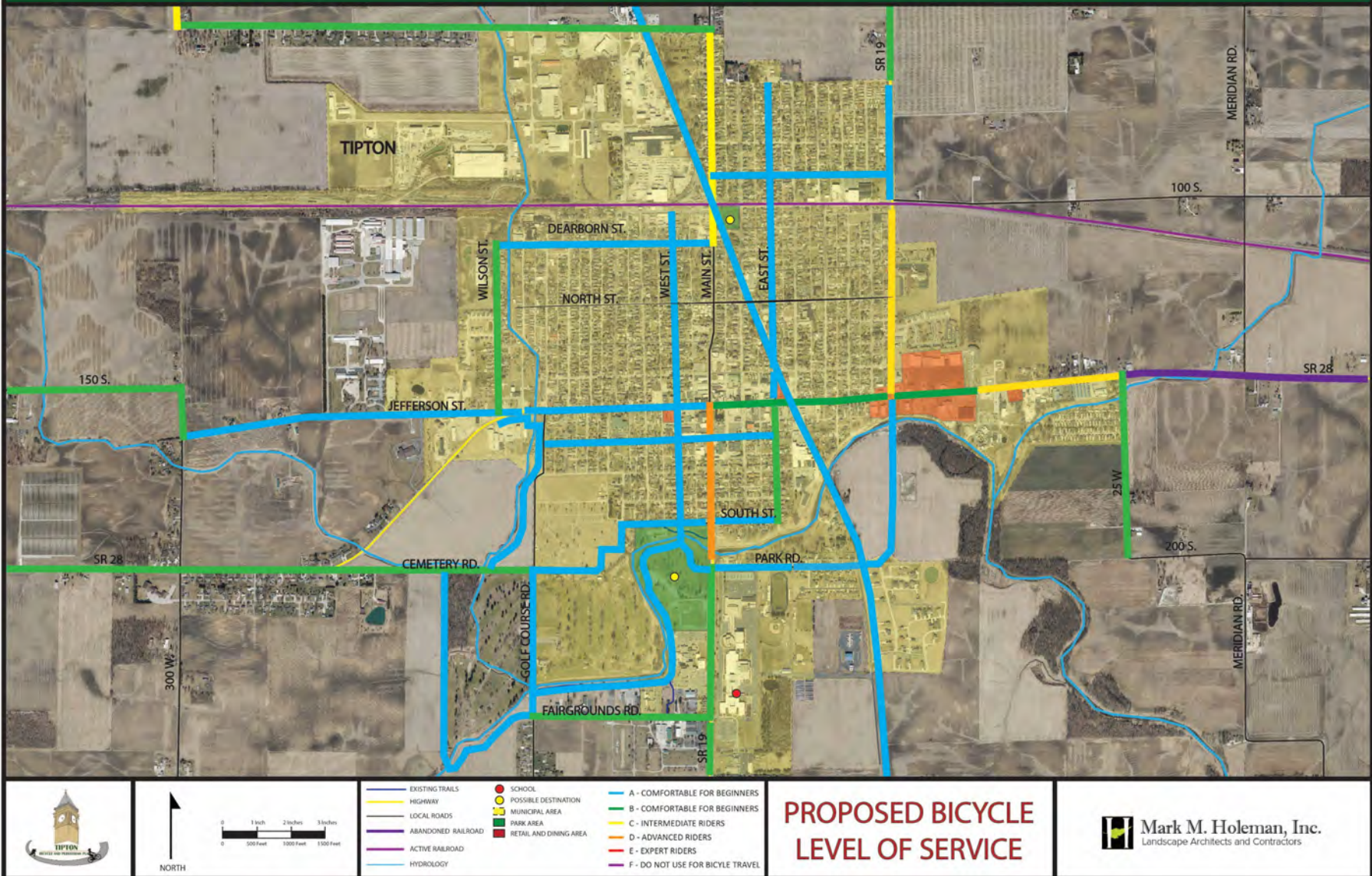
**PROPOSED  
PEDESTRIAN LEVEL OF  
SERVICE**



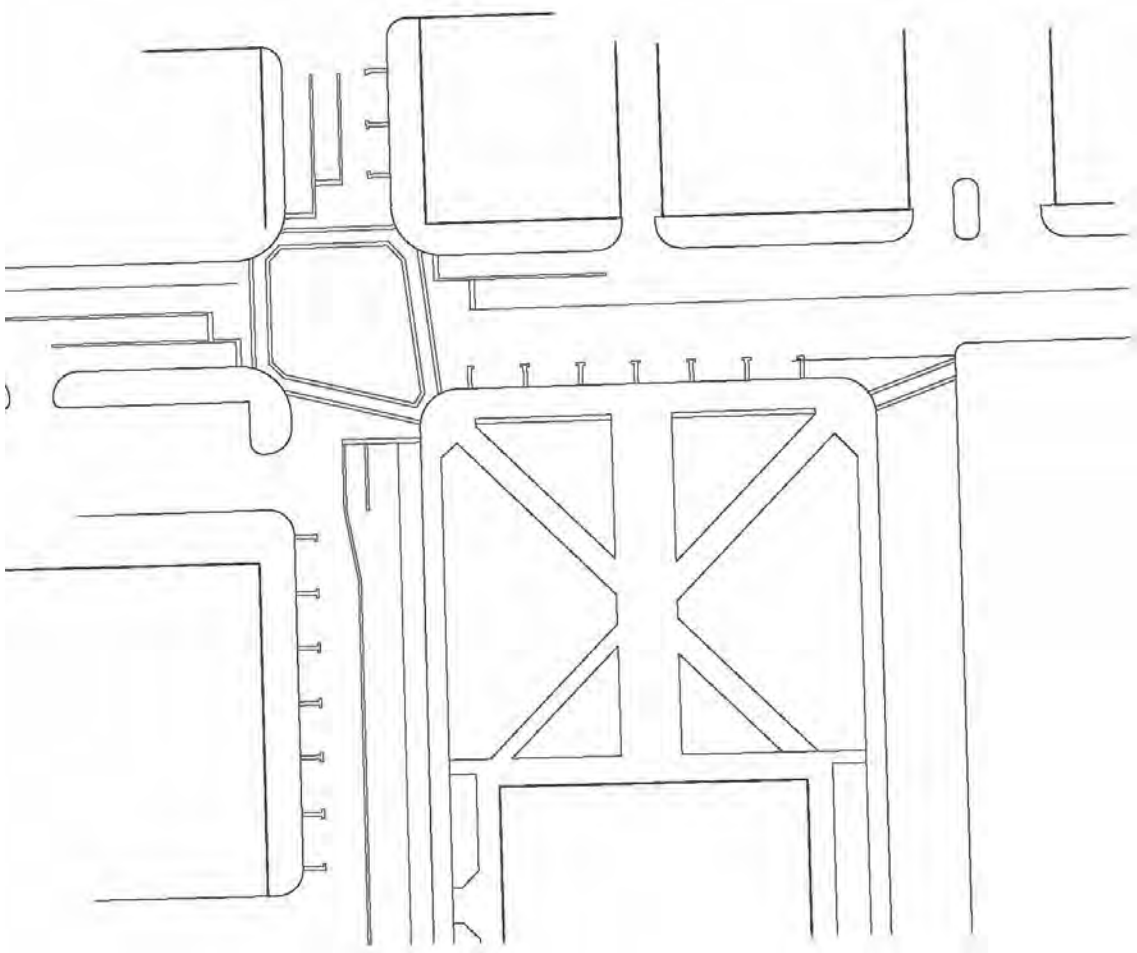
**Mark M. Holeman, Inc.**  
Landscape Architects and Contractors



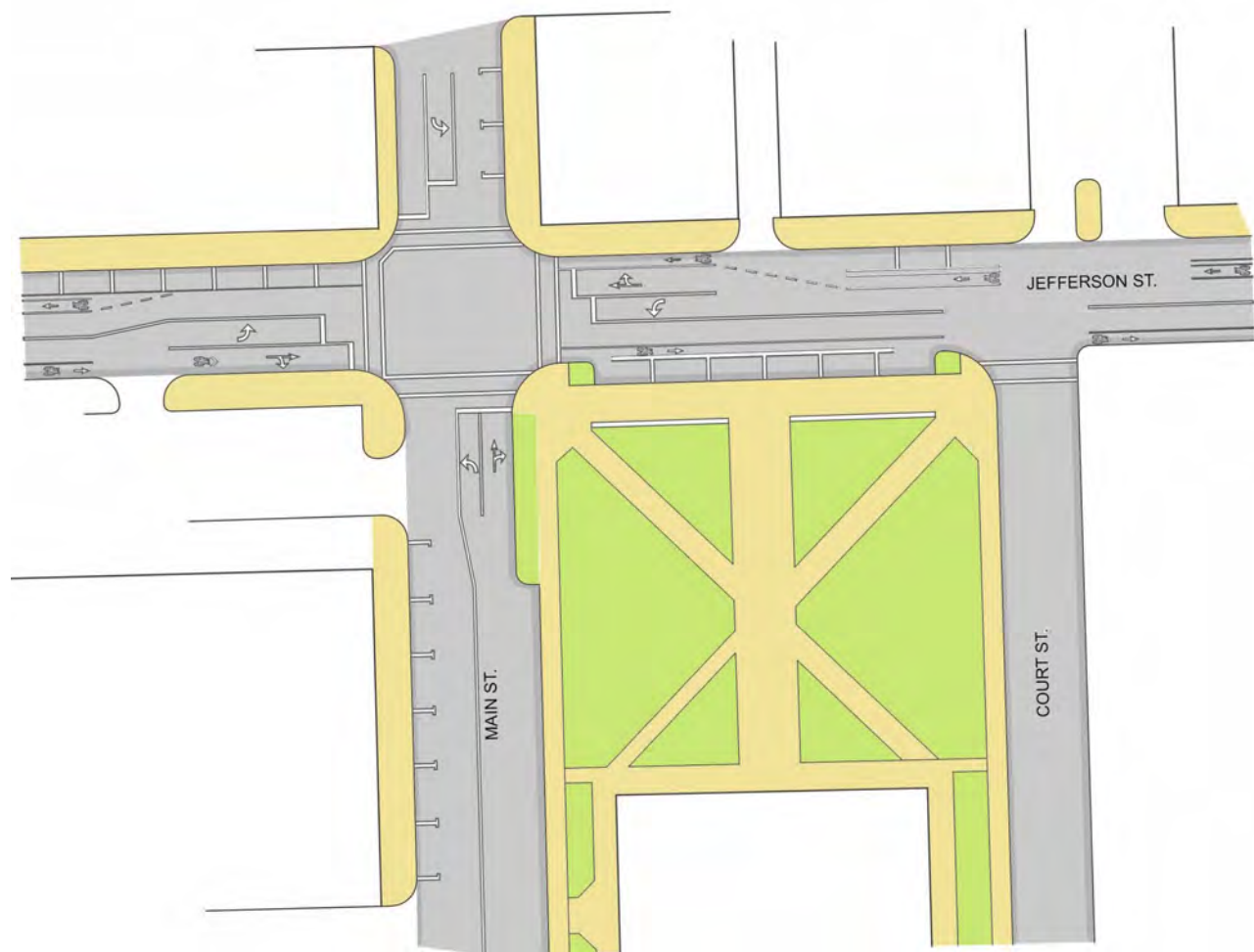
## TIPTON BICYCLE AND PEDESTRIAN MASTER PLAN - CITY MAP







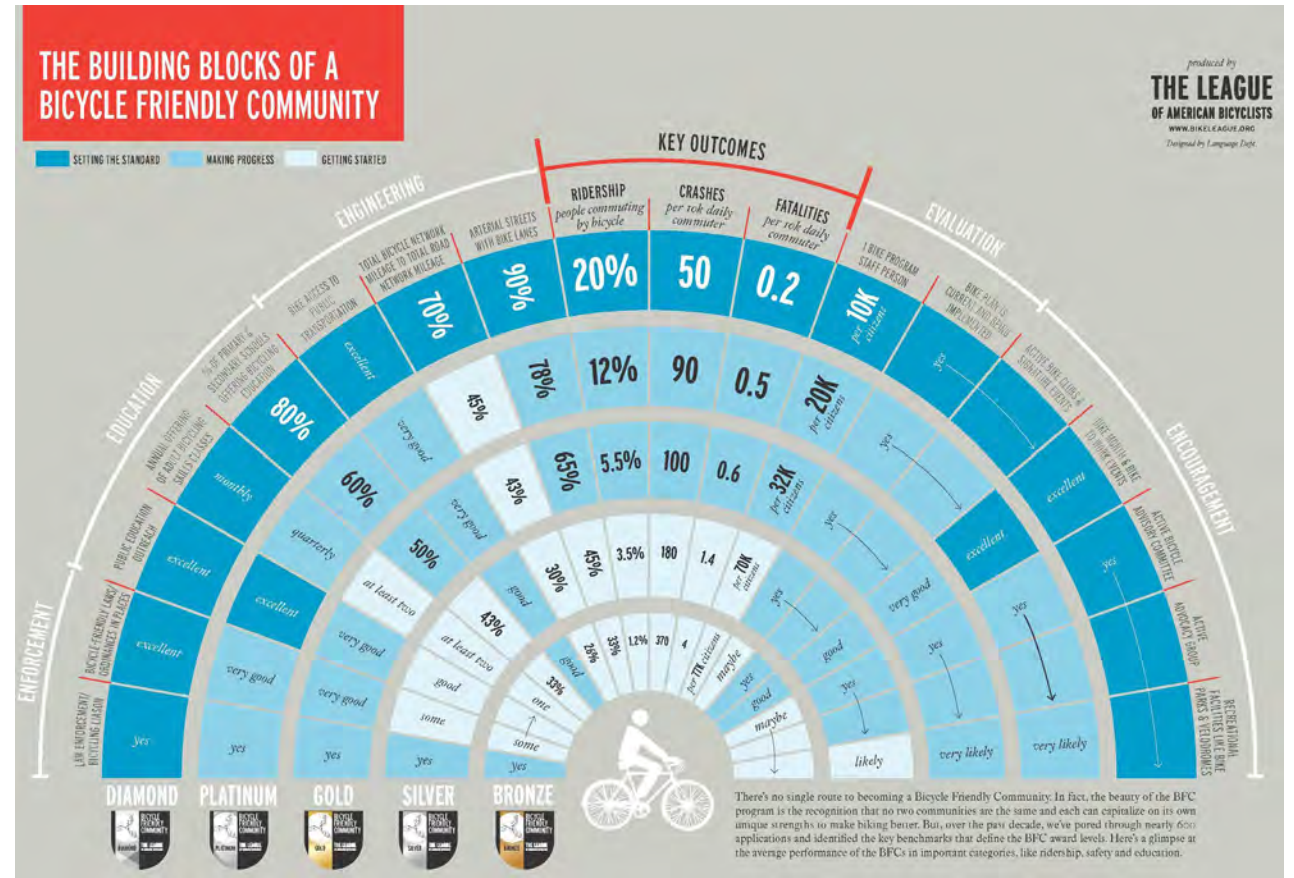
EXISTING



PROPOSED

# PROGRAMS AND POLICIES

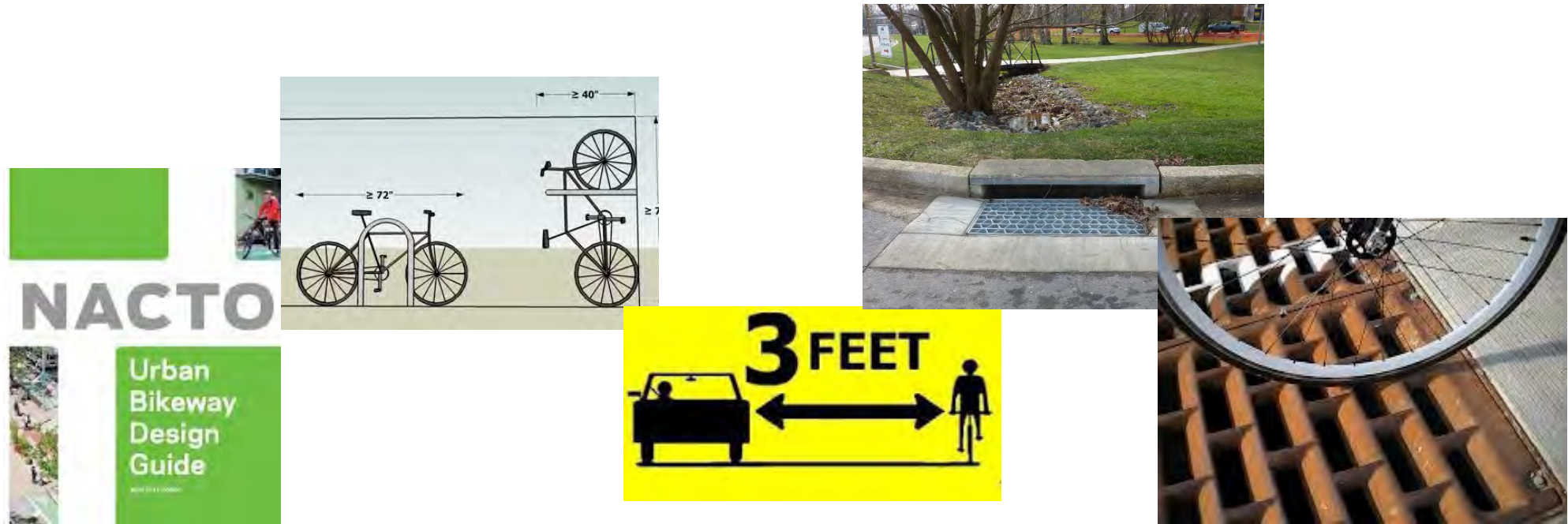
- 1) Equity and Accessibility
- 2) Engineering
- 3) Education
- 4) Encouragement
- 5) Evaluation and Planning





# Engineering

---



# Education

---





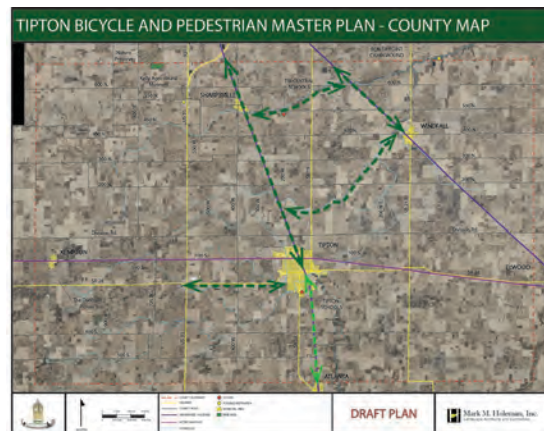
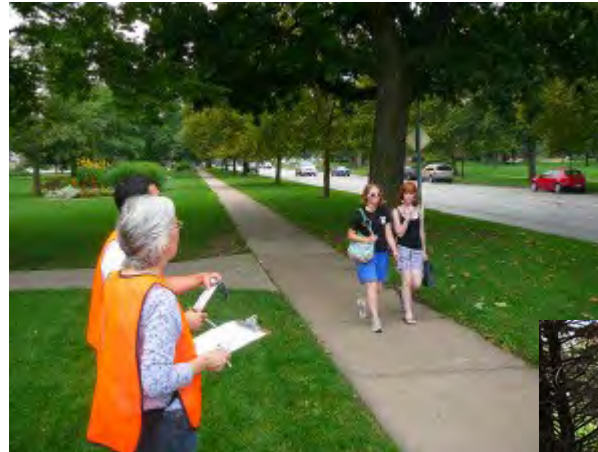
# Encouragement

---



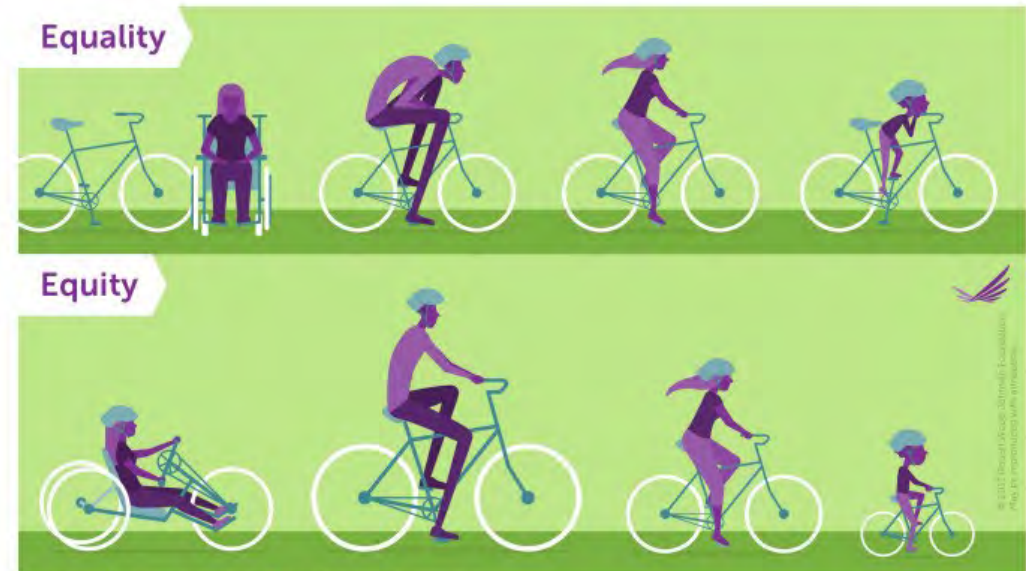
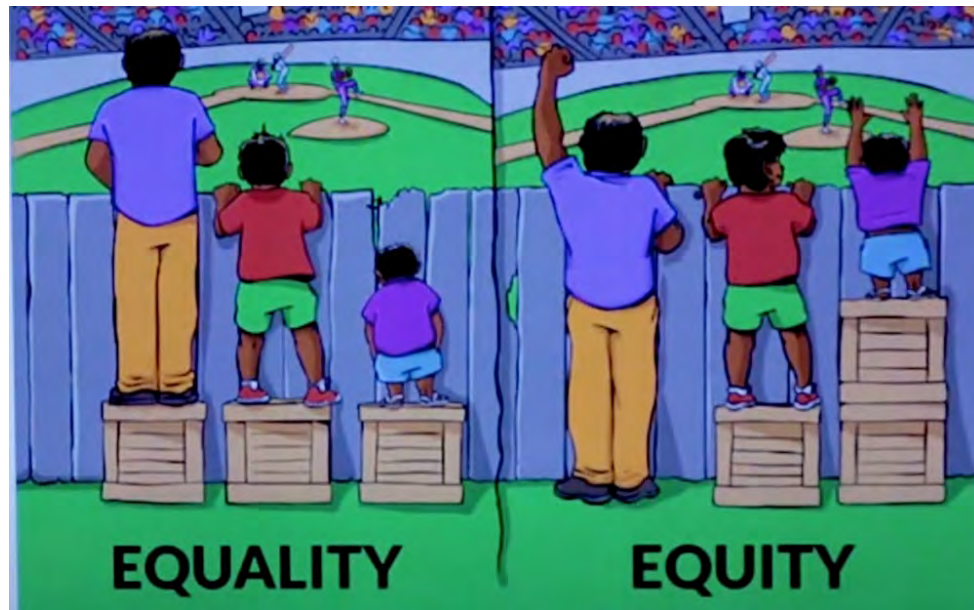
# Evaluation & Planning

---





# Equity and Accessibility



Graphic courtesy of the Robert Wood Johnson Foundation

## Next Steps

# Final Plan

- REVISIONS
- ADOPTION
  - TIPTON CITY COUNCIL
  - COUNTY COMMISSIONERS